

Multi Room Heat Pump Systems

Total Home Heating Solutions



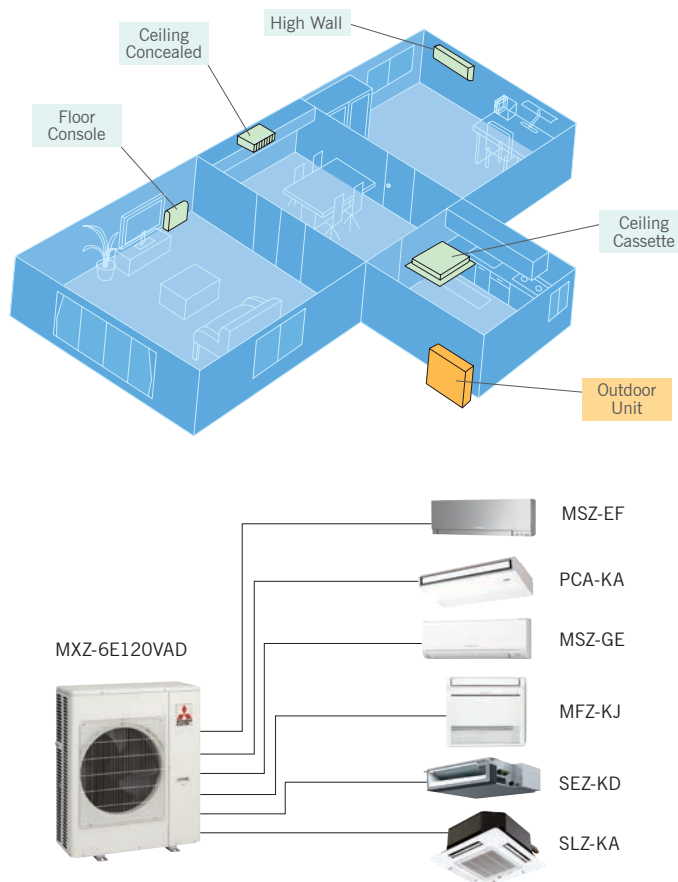
What is a Multi Room Heat Pump System?

While a standard heat pump system consists of an indoor and outdoor unit, a Multi Room Heat Pump System allows you to connect multiple indoor units to a single outdoor unit.

This system not only gives you the freedom to select the indoor model best suited to each and every room in your home, it also enhances exterior aesthetics by reducing the number of outdoor units required.

With a Multi Room Heat Pump System you have the freedom to choose the ideal unit for each area of your home, keeping you comfortable without cluttering the exterior.

With Mitsubishi Electric Heat Pump technology, you also get the benefit of superior efficiency and energy savings.



Choosing the Right Heat Pump For Your Home

This brochure will detail the indoor units, outdoor units, and controllers available as part of a Multi Room Heat Pump System. Once you have selected your preferences, we recommend you book a free in-home consultation with one of our qualified installers.

Choosing the right heat pump system requires an assessment of the areas in your home that need to be heated; ensuring you get the best, most efficient system for your home.

A qualified installer will carry out accurate sizing calculations and expertly assess other factors involved in heat loss and gain.



Visit www.mitsubishi-electric.co.nz/heatpump/installer to book your free in-home consultation today!



Contents



About Multi Room Heat Pump Systems 4

Indoor Model Options



Classic GE Series 5
High Wall Heat Pumps



Deluxe FH Series 6
High Wall Heat Pumps



Designer Series 8
High Wall Heat Pumps



Classic SLZ Cassette Series 9
Ceiling Mounted



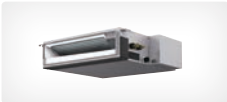
RapidHeat Series 10
Floor Consoles



Ceiling Suspended PCA Series 12
Ceiling Mounted



Deluxe PLA Cassette Series 13
Ceiling Mounted



Total Home SEZ Series 14
Ceiling Concealed



Total Home PEAD Series 15
Ceiling Concealed - Ducted System



Multi Room Series Outdoor Units 16

Power Multi Series and Classic Multi Series

Multi Room Heat Pump Compatibility Chart 18

Controllers 20

Handheld, Wall Mounted, Central, Wi-Fi Control and Zone Control

Specifications 22

Your Multi Room Heat Pump Recommendation 23

Multi Room Heat Pump Systems

What Indoor Units Can I Connect to my Multi Room Heat Pump System?

All of the Mitsubishi Electric indoor units listed within this brochure are compatible with a Mitsubishi Electric multi room outdoor unit. However, when deciding which indoor units you wish to install in your home it is important to keep in mind each multi room outdoor unit varies in the number and size/capacity of indoor units that connect to them.

To help assist in your decision, all Mitsubishi Electric indoor units listed in this brochure have a class rating. This is as simple as referring to the numerical component of the model name e.g., the MSZ-GE25VAD2 has a class rating of 25, the SLZ-KA50VAQ has a class rating of 50 and so on.



MSZ-GE25VAD2
Heating Capacity: 3.2 kW
Cooling Capacity: 2.5 kW



SLZ-KA50VAQ/L
Heating Capacity: 4.5 kW
Cooling Capacity: 4.2 kW

To bring the system together, each of our multi room outdoor units have a specified number of indoor units able to be connected (ranging from 2-8 dependent on unit), a maximum class rating which determines which indoor units are compatible (ranging from 22-100) and a total maximum class rating (the class combination of all units connected).

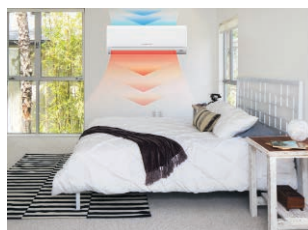
For example the MXZ-3E54VAD could have both an MSZ-GE42VAD2 indoor unit and an MSZ-EF50VE2W indoor unit connected, as each indoor unit has a maximum class no greater than 50 (one is 42 and the other 50), and the total maximum class combination of all indoors is no greater than 100 (in this case totalling 92).



Three Port
*Connect 2-3 indoor units
(up to Class 50), with max.
class total of 100.*

It is important to remember that the maximum rated capacity of the MXZ-3E54VAD is 7 kW of heating/5.4 kW of cooling, so depending on the indoor units chosen, the actual capacity of heating/cooling produced by the indoor unit may vary from their actual rated capacity.

For example, if you have an MSZ-GE42VAD2 and an MSZ-GE50VAD2 indoor unit on an MXZ-3E54VAD outdoor, when the two indoor units operate simultaneously in heating mode, the MSZ-GE42VAD2 will produce up to 3.1 kW, and the MSZ-GE50VAD2 will only produce 3.7 kW of its rated heating capacity. When only one of the indoor units is running you will receive up to an impressive 6.8 kW of rated heating capacity from the MSZ-GE50VAD2 alone.



MSZ-GE42VAD2

Only produces **3.1kW** when both running at the same time



MSZ-GE50VAD2

Only produces **3.7kW** when both running at the same time



MSZ-GE42VAD2

MSZ-GE42VAD2 is currently turned off



MSZ-GE50VAD2

Produces **6.8kW** when only one is running





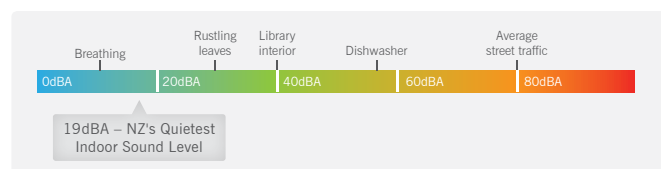
Classic GE Series

High Wall Heat Pumps

The GE Series is our best-selling heat pump range ever! This is a testament to exceptional product quality, reliability and superior heating performance. Unrivalled for quietness, they are ideal where it matters most - in living rooms and bedrooms.

New Zealand's Quietest Heat Pump

With an indoor sound level of only 19dBA, the GE25 and GE35 are still New Zealand's quietest indoor heat pumps ever!



Energy Efficiency

Mitsubishi Electric's i-Save and Econo Cool Modes are included on all GE models. i-Save Mode allows you to save both temperature and fan speed combinations and return to these at the touch of a button. Econo Cool provides maximum energy efficiency in cooling mode.



Dimensions (WxDxH): 798x232x295mm

MSZ-GE22VAD2

Heating Capacity: 3.0 kW
Cooling Capacity: 2.2 kW

MSZ-GE42VAD2

Heating Capacity: 5.0 kW
Cooling Capacity: 4.2 kW

MSZ-GE25VAD2

Heating Capacity: 3.0 kW
Cooling Capacity: 2.5 kW

MSZ-GE50VAD2

Heating Capacity: 5.8 kW
Cooling Capacity: 4.8 kW

MSZ-GE35VAD2

Heating Capacity: 4.0 kW
Cooling Capacity: 3.5 kW

MSZ-GE60VAD

Heating Capacity: 6.8 kW
Cooling Capacity: 6.0 kW



Dimensions (WxDxH): 1100x238x325mm

MSZ-GE71VAD

Heating Capacity: 8.1 kW
Cooling Capacity: 7.1 kW

MSZ-GE80VAD

Heating Capacity: 9.0 kW
Cooling Capacity: 7.8 kW

Note: Actual capacity may vary on the indoor/outdoor unit combination.

Features: Classic GE Series

Whisper Quiet Operation	Low Temperature Performance	Healthy Catechin Filter (GE22/25/35/42/50 only)	Anti-Allergy Enzyme Filter (GE22/25/35/42/50 only)	Nano Platinum and Electrostatic Anti-Allergy Enzyme Filter (GE60/71/80 only)
i-Save Mode	Econo Cool	Wide and Long Airflow (GE60/71/80 only)	7-Day Programmable Controller*	Optional Wi-Fi Control

Visit www.mitsubishi-electric.co.nz for more information on these features.

*Line-of-Sight version for GE models 25~50.



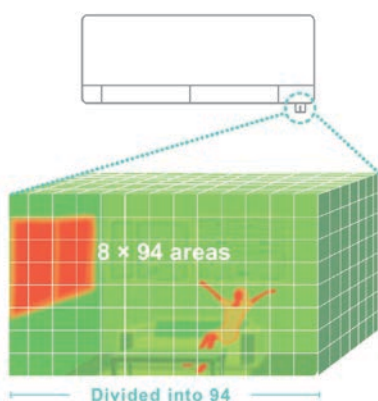
Deluxe FH Series

High Wall Heat Pumps

The Deluxe FH High Wall Series truly is the flagship amongst heat pumps. New advanced features provide unparalleled comfort and energy efficiency. Plasma Quad Filtration, the unique 3D i-See Sensor, Dual Split Vanes and Natural Air Flow function have set the benchmark in true customised comfort.

3D i-See Sensor

Exclusive to the Deluxe FH Series, the 3D i-See Sensor will continuously analyse the temperature profile of a room to detect hot and cold spots. This intelligent 8-element sensor simultaneously scans the entire room and divides it into 752 three-dimensional zones, measuring the temperature in each zone to detect the exact position of its occupants based on their heat signatures. The perfect amount of heating or cooling can be customised based on preference.



Dual Split Vane Technology

The Deluxe FH Series' unique split vane design allows airflow to be customised to suit different areas of the room by independently directing air upwards, downwards or to the side. This flexibility can prevent air from striking obstacles or direct air to areas that require additional heating or cooling. Split vane airflow provides fast, even and effective heating, while also being a feasible solution in multi-level environments.

The split vane design also means individual preferences can now be more easily accommodated. You prefer to feel the heat directly but others do not? Simple! A breakthrough in comfort; the split vane design means air flow can be customised to suit both occupants in the room at the same time.

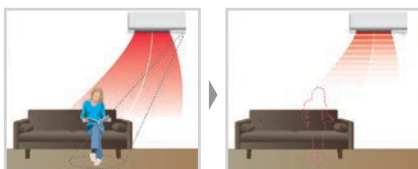




Energy Saving Intelligent Sensor

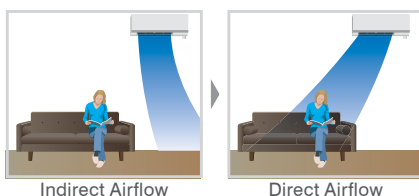
The 3D i-See Sensor is an intelligent occupancy sensor that, after a set period of absence, will switch to Energy

Saving Mode. This raises or lowers the set temperature by 2°C as required, leading to greater energy saving.



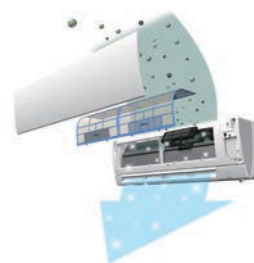
Automatic Comfort Control

The unit can be set to automatically direct airflow towards or to avoid the occupant using the i-See Sensor.



Advanced Plasma Quad Filtration

The Plasma Quad Filter System is an advanced, multi-stage filtration system designed to effectively neutralise contaminants such as allergens, viruses and bacteria, ensuring the circulation of fresh, clean air back into the room.



**ADVANCED PLASMA
QUAD FILTRATION**

The Plasma Quad Filter is charged with an electrical field and acts as a micro mesh 'curtain' across the air inlet opening, effectively catching dust particles, allergens, bacteria and viruses with 99% efficiency (independently tested in a 25m³ room).

In addition, two air purifying filters and a deodorising filter effectively neutralise odours from the air. This level of advanced filtration system is ideal for those suffering from asthma and other airborne allergies.



MSZ-FH25VE

Heating Capacity: 3.2 kW
Cooling Capacity: 2.5 kW

MSZ-FH35VE

Heating Capacity: 4.0 kW
Cooling Capacity: 3.5 kW

MSZ-FH50VE

Heating Capacity: 6.0 kW
Cooling Capacity: 5.0 kW

Dimensions (WxDxH): 925x234x305mm (+17)

Note: Actual capacity may vary on the indoor/outdoor unit combination.

Features: Deluxe FH Series

Whisper Quiet
Operation

Low Temperature
Performance

3D i-See Sensor

Advanced Plasma
Quad Filtration

Dual Split Vane Technology

Natural Airflow
(Cooling & Fan Modes Only)

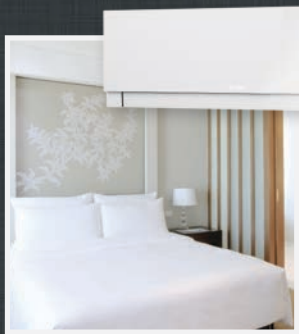
Low Standby Power

Energy Saving Intelligent Sensor

7-Day Programmable Controller

Optional Wi-Fi Control

Visit www.mitsubishi-electric.co.nz for more information on these features.



Colour. The choice is finally yours.

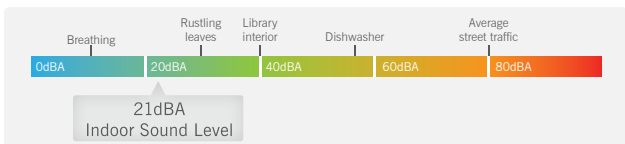
Designer Series

High Wall Heat Pumps

The Designer Series combines exceptional energy efficiency with award-winning aesthetics. The elegant slimline design is available in a range of colours, including Glossy White, Matte Silver or Rich Black Diamond - so you can truly reflect your design personality.

Quiet Operation

All Designer Series indoor units feature Silent Mode, a fan speed setting that provides quiet operation as low as 21dBA. This ensures you will feel the warmth, not hear it.



7-Day Programmable Controller

With up to four time and temperature settings for each day of the week possible, the 7-Day Controller is perfect for regulating energy usage without compromising on comfort.



Advanced Filtration

The Nano Platinum Deodorising Filter not only improves air quality but also reduces airborne bacteria. An additional optional Electrostatic Anti-Allergy Enzyme Filter can also be added.

Reddot Design Award

The simple yet elegant Mitsubishi Electric Designer Series has been awarded the international Reddot product design award in recognition of outstanding design quality.



**reddot design award
winner 2015**



Dimensions (WxDxH): 885 x 195 x 299mm

MSZ-EF22VE2W/B/S

Heating Capacity: 3.0 kW
Cooling Capacity: 2.2 kW

MSZ-EF25VE2W/B/S

Heating Capacity: 3.2 kW
Cooling Capacity: 2.5 kW

MSZ-EF35VE2W/B/S

Heating Capacity: 4.0 kW
Cooling Capacity: 3.5 kW

MSZ-EF42VE2W/B/S

Heating Capacity: 5.4 kW
Cooling Capacity: 4.2kW

MSZ-EF50VE2W/B/S

Heating Capacity: 5.8kW
Cooling Capacity: 5.0 kW

Note: Actual capacity may vary on the indoor/outdoor unit combination.

Features: Designer Series

Whisper Quiet
Operation

Low Temperature
Performance

Nano Platinum Filter

Optional Electrostatic
Anti-Allergy Enzyme Filter

Stylish Flat
Panel Design

7-Day Programmable Controller

Optional Wi-Fi Control



Classic SLZ Cassette Series

Ceiling Mounted

Compact and ultra quiet, our range of ceiling cassette systems are equipped with four-way airflow and cutting edge control. They offer you the flexibility to keep your wall and floor space free without compromising on comfort.

Air Cleaning Filter

The built in filter on all Classic SLZ Cassettes removes dust and other particles, keeping the air clean at all times. Maintenance is as simple as vacuuming. The long life filters can be used for approximately 2,500 hours before requiring replacement.



Fresh-Air Intake

All Classic SLZ Cassettes have an optional Fresh Air Intake on the main body of the indoor unit. This makes it possible to bring fresh air in directly, where it can then be heated to provide clean, refreshing comfort.

Compact Design

Our ceiling cassettes are New Zealand's favourite. With the lightweight unit sitting in your ceiling space, only the grille is visible, providing easy, discreet installation into your home or office.



Versatile Control

The Classic SLZ Cassette range comes equipped with your choice of either an infrared remote with 24-hour timer or a wall-mounted wired controller with 7-Day timer.

Energy Saving Operation

Boasting low electricity consumption, the Classic SLZ Cassettes are the key to fresh, cost-effective comfort.



SLZ-KA25VAQ/L

Heating Capacity: 3.1 kW
Cooling Capacity: 2.3 kW

SLZ-KA50VAQ/L

Heating Capacity: 4.5 kW
Cooling Capacity: 4.2 kW

Unit Dimensions (WxDxH): 570x570x235mm
Grille Panel Dimensions (WxDxH): 650x650x20mm

Note: Actual capacity may vary on the indoor/outdoor unit combination.

Features: Classic SLZ Cassettes

Whisper Quiet Operation

Low Temperature Performance

Fresh Air Intake

Built-in Air Cleaning Filter

Auto Vane

4-Way Airflow

24 Hour Controller (SLZ-KA25/50VAL)

Wall Mounted 7-Day Controller (SLZ-KA25/50VAQ)

Visit www.mitsubishi-electric.co.nz for more information on these features.



RapidHeat^o Series

Floor Consoles



**GOOD DESIGN
AWARD 2014**

New Zealand's quietest floor consoles* feature a new contemporary slimline design and dramatically reduced depth. RapidHeat Floor Consoles are the perfect solution for unobtrusive heating at floor level. New advanced sensors with Intuitive Control Logic Technology offer unparalleled low temperature heating performance in the shortest amount of time, all while maintaining maximum energy efficiency.

RapidHeat Technology

**INDUSTRY
FIRST**

Advanced sensors coupled with Intuitive Control Logic mean optimal running temperatures are reached in the shortest amount of time with maximum energy efficiency. Automatically activated at start up in low temperature conditions when two-way air flow is selected, warm air is blown in a downward direction first before the air is returned back into the indoor unit where it is reheated a second time. As a result, a room can now heat up to twice as fast compared to our previous model.

New Zealand's Quietest Heat Pump

**INDUSTRY
FIRST**

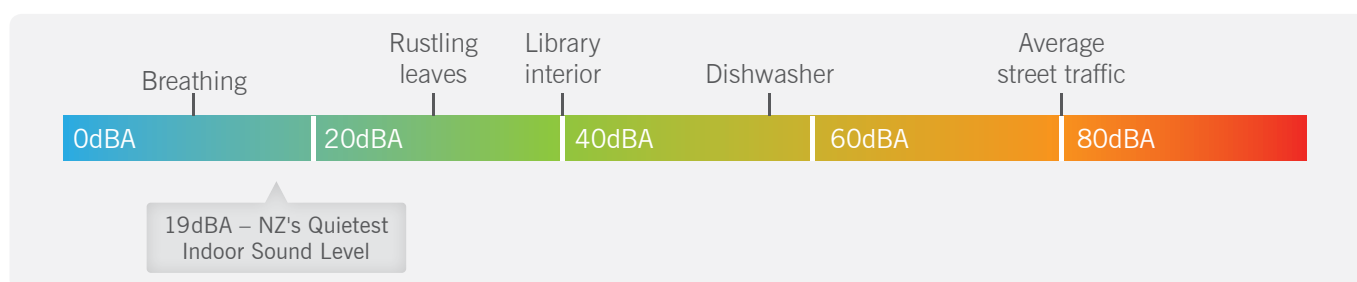
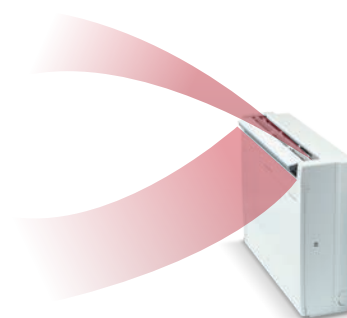
Starting at barely a whisper, Mitsubishi Electric RapidHeat Floor Consoles are New Zealand's quietest floor console heat pumps starting from just 19dBA*. This is achieved through the use of a larger fan scroll that not only enables the unit to be quieter, but also increases its efficiency when heating your home.

Multi Vane Flow - Even Heat Distribution

**INDUSTRY
FIRST**

The Multi Vane Flow function blows warm air in both an upward and downward direction, providing fast, even and effective heating whilst also reducing draughts.

This is achieved via three uniquely shaped vanes that are designed for better airflow control and also provide the freedom to be customised to your preference.





Sleek, Sophisticated Design

Mitsubishi Electric RapidHeat Floor Consoles feature a new contemporary design that can be recessed into your wall to dramatically reduce the depth of the indoor unit from 215mm to 145mm – a decrease of 33%.

With the addition of a removable base, RapidHeat Floor Consoles are the perfect solution - offering compact, unobtrusive floor mounted heating for new buildings and renovation projects.



Cleaner, Healthier Air

RapidHeat Floor Consoles make use of two types of filtration to provide cleaner, healthier air. The Nano Platinum Filter generates stable antibacterial and deodorising effects, whilst the Electrostatic Anti-Allergy Enzyme Filter uses enzyme catalysts to filter allergens and remove harmful bacteria.



Dimensions (WxDxH): 750 x 215 x 600mm

MFZ-KJ25VE

Heating Capacity: 3.4 kW
Cooling Capacity: 2.5 kW

MFZ-KJ35VE

Heating Capacity: 4.3 kW
Cooling Capacity: 3.5 kW

MFZ-KJ50VE

Heating Capacity: 5.8 kW
Cooling Capacity: 5.0 kW

Note: Actual capacity may vary on the indoor/outdoor unit combination.

Features: RapidHeat Series

NZ's Quietest Floor Console*

Anti-Allergy Enzyme Filter

Nano Platinum Filter

RapidHeat Technology

Multi Vane Air Flow

Low Temperature
Performance

7-Day Programmable Controller

Optional Wi-Fi Control

* MFZ-KJ25/35 indoor sound level.

Visit www.mitsubishi-electric.co.nz for more information on these features.



Ceiling Suspended PCA Series

Ceiling Mounted

A stylish, slimline indoor unit designed to provide comfort in large, open areas such as conference rooms or open plan offices - Mitsubishi Electric's range of Ceiling Suspended indoor units are designed to blend in seamlessly at ceiling height. With four speed settings and auto air-speed adjustment, the Ceiling Suspended PCA Series units are ideal for small and large areas alike.

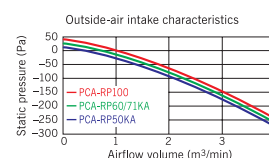
Equipped with Automatic Air-Speed Adjustment

In addition to the conventional 4-speed setting, units are now equipped with an automatic air-speed adjustment mode. This setting automatically adjusts the air-speed to conditions that match the room environment. At the start of heating/cooling operation, the airflow is set to high-speed to quickly heat/cool the room. When the room temperature reaches the desired setting, the airflow speed is decreased automatically for stable comfortable heating/cooling operation.



Fresh Air Intake

Units are equipped with an optional Fresh Air Intake on the main body of the indoor unit. This makes it possible to bring fresh air in directly, where it can then be heated, to provide clean, refreshing comfort.



High/Low Ceiling Mode

All PCA Series units are equipped with high and low-ceiling operation modes that make it possible to switch the airflow volume to match room height. The ability to choose the optimum airflow volume makes it possible to recreate a light and gentle airflow that feels as natural as possible.



Dimensions (WxDxH):
 PCA-RP50: 960 x 680 x 230mm
 PCA-RP60-71: 1280 x 680 x 230mm
 PCA-RP100: 1600 x 680 x 230mm

Note: Actual capacity may vary on the indoor/outdoor unit combination.

PCA-RP50KAQ

Heating Capacity: 5.5 kW
 Cooling Capacity: 5.0 kW

PCA-RP60KAQ

Heating Capacity: 6.9 kW
 Cooling Capacity: 5.7 kW

PCA-RP71KAQ

Heating Capacity: 7.9 kW
 Cooling Capacity: 7.1 kW

PCA-RP100KAQ

Heating Capacity: 11.2 kW
 Cooling Capacity: 10.0 kW

Features: Classic Suspended PCA

Whisper Quiet Operation

Stylish Slimline Design

Built-in Air Filter

Auto Air-Speed Adjustment

Four Speed Settings

High Ceiling Mode

Low Ceiling Mode

Filter Check Signal

Low Temperature Performance

Fresh Air Intake



Deluxe PLA Cassette Series

Ceiling Mounted

Deluxe PLA Cassettes set a new benchmark in space heating. Featuring cutting edge airflow and independent vane direction control, Deluxe PLA Cassettes revolutionise flexibility, allowing you to keep your wall and floor space free without compromising on comfort.

Wide Airflow

Deluxe PLA Series Cassettes utilise wide-angle outlets to distribute airflow to all corners of the room, ensuring the room is cooled/heated in an even and sufficient manner. Horizontal airflow fan speed has been significantly reduced compared to conventional models, contributing to increased comfort for occupants.

Minimise Cold Draughts

The Horizontal Airflow function prevents both cold draughts and/or heating airflow from striking occupants directly, thereby keeping people from becoming over-chilled/over-heated.

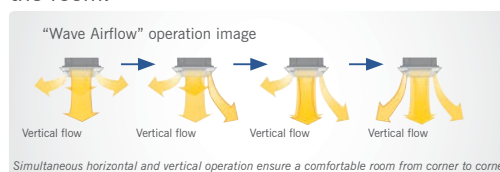


Independent Vane Direction

With the ability to independently control each vane's airflow pattern, Deluxe PLA Series Cassettes are perfect for both residential and office/commercial environments. Simply adjust airflow via the PAR-31MAA Wired Controller to suit the interior layout and seasonal conditions, ensuring even temperature distribution at all times.

Wave Airflow for Optimum Heat Distribution

Advanced control of vanes, called Wave Airflow, provides even greater heat distribution by periodically moving vanes up and down to provide a consistent temperature throughout the room.*



Unit Dimensions (WxDxH):
PLA-RP60-71: 840 x 840 x 258mm
PLA-RP100: 840 x 840 x 298mm

Panel Dimensions (WxDxH):
PLA-RP60-71: 950 x 950 x 35mm
PLA-RP100: 950 x 950 x 35mm

PLA-RP60BA

Heating Capacity: 6.9 kW
Cooling Capacity: 6.1 kW

PLA-RP71BA

Heating Capacity: 8.0 kW
Cooling Capacity: 7.1 kW

PLA-RP100BA

Heating Capacity: 11.2 kW
Cooling Capacity: 10.0 kW

Note: Actual capacity may vary on the indoor/outdoor unit combination.

Features: Deluxe PLA Cassettes

Built-in Filter	Filter Check Signal	Auto Vane	4-Way Airflow	Wave Airflow*
Horizontal Airflow	High Ceiling Mode	Optional i-See Sensor	Low Temperature Performance	Fresh Air Intake

Visit www.mitsubishi-electric.co.nz for more information on these features.

*Wave Airflow available when in Auto Vane Mode.



Total Home SEZ Series

Ceiling Concealed

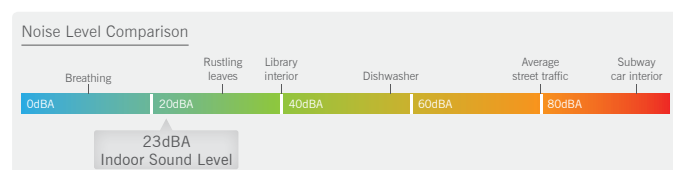
Compact, whisper quiet and highly efficient. Our ceiling concealed SEZ Series units fit easily and discreetly into rooms with lowered ceilings. Optional fresh air intake provides all round refreshing comfort.

Compact Design

SEZ Series units are a slim 200mm in height, making them ideal for tight installation spaces. Meanwhile only the grille remains visible, providing you with discreet comfort.

Impressively Quiet

SEZ Series units offer quiet operation at a hushed noise level of 23dBA (SEZ-KD35), ensuring a calm and comfortable environment. They're so quiet that you'll find yourself checking to see if they're on.



Fresh Air Intake

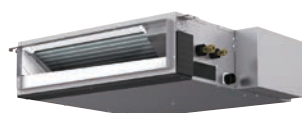
The main body on all SEZ Series units is designed to make it possible to intake fresh air from outside to provide clean, refreshing comfort.

Air Cleaning Filter

This built-in filter removes dust and other particles, keeping the air clean at all times. Maintenance is as simple as vacuuming. The long-life filter in SEZ Series indoor units can be used for approximately 2,500 hours before requiring replacement.

Energy Saving Operation

Boasting low electricity consumption, SEZ Series air conditioners are the key to fresh, cost-effective comfort.



Dimensions (WxDxH):
SEZ-KD35-50: 900 x 700 x 200mm
SEZ-KD60-71: 1100 x 700 x 200mm

SEZ-KD35VAQ

Heating Capacity: 4.2 kW
Cooling Capacity: 3.7 kW

SEZ-KD71VAQ

Heating Capacity: 8.1 kW
Cooling Capacity: 7.1 kW

SEZ-KD50VAQ

Heating Capacity: 6.4 kW
Cooling Capacity: 5.1 kW

SEZ-KD60VAQ

Heating Capacity: 7.4 kW
Cooling Capacity: 5.6 kW

Note: Actual capacity may vary on the indoor/outdoor unit combination.

Features: Ceiling Concealed SEZ Series

Whisper Quiet Operation

Compact Design

Air Cleaning Filter

Lossnay Interlock

Low Temperature Performance

Optional Wi-Fi Control



Total Home PEAD Series

Ceiling Concealed - Ducted system

The unobtrusive PEAD ducted whole home system is specifically designed for installations where ceiling space is minimal. The system is super energy efficient and whisper quiet. With only its grilles visible, it is the perfect hidden comfort solution for heating or cooling multiple rooms at the same time.

High Energy Saving Efficiency

PEAD Series Models achieve enhanced energy savings through adopting a highly efficient DC fan motor, contributing to an impressive reduction in electricity costs.

Zone Control Option

The optional Zone Controller brings intuitive, yet simple control to a whole new level, with the ability to control up to 8 zones, automatic unloading/ramping and energy saving sensor functions.

Ideal Airflow

The flexible duct design and variable-pressure of our ducted systems increase variation in airflow options, ensuring the system operates in a way that best suits virtually all room layouts.

Wide Selection of Fan Speeds and External Static Pressure

With a wide range of adjustable static pressures and fan speeds, these units are applicable to a wide range of building types and applications.

Fresh, Clean Comfort

Further increase energy savings while ventilating your home through the combination of a PEAD Ducted System with Mitsubishi Electric Lossnay. Now you can remove stale air and control moisture whilst simultaneously recovering energy to provide your home with fresh, clean comfort. Recovered energy from outgoing stale air is used to pre-heat or pre-cool incoming fresh air. The net effect; an overall reduction in additional heating or cooling required.



Dimensions (WxDxH):

PEAD-RP71: 1100 x 732 x 250mm

PEAD-RP100: 1400 x 732 x 250mm

PEAD-RP71JAA

Heating Capacity: 8.0 kW

Cooling Capacity: 7.1 kW

PEAD-RP100JAA

Heating Capacity: 11.2 kW

Cooling Capacity: 10.0 kW

Note: Actual capacity may vary on the indoor/outdoor unit combination.

Features: Ducted PEAD Series

Ducted Heating

Easy Installation

Variety of Outlet Options

Lossnay Interlock

Low Temperature Performance

Optional Zone Controller

Optional Wi-Fi Control

Visit www.mitsubishi-electric.co.nz for more information on these features.

Multi Room Series Outdoor Units

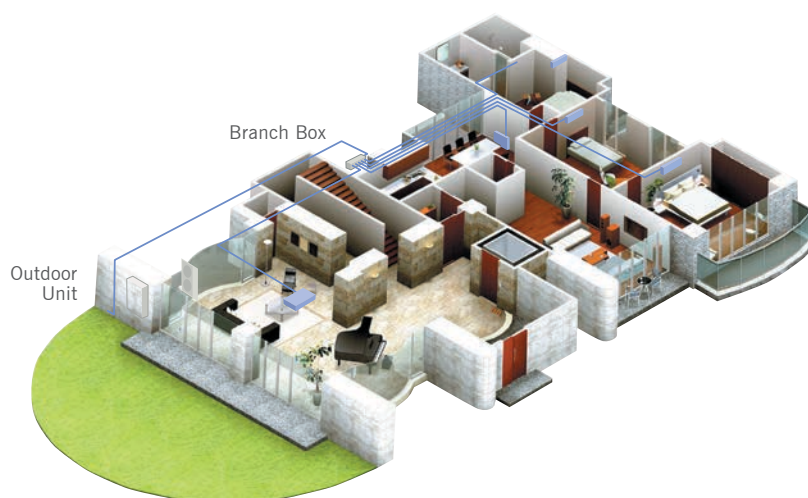
Multi Room Series outdoor units offer the ability to connect the minimum number of indoor units initially, with the option of adding further indoors later as required. There is no need to connect all indoors at once, allowing you total freedom in your selection as well as future-proofing your home's heating requirements as needed.

The Mitsubishi Electric Multi Room Series consists of two ranges: The Classic Multi Series and the Power Multi Series. The Classic Multi Series has been developed for small to medium-sized homes requiring between two and six indoor units, while the Power Multi Series has been designed specifically for larger

applications. The unique branch box on the Power Multi Series allows for a greater number of indoor units to be connected, a single building penetration for pipe work, extended pipe runs for greater versatility and less piping required due to only one set of pipes having to go from the outdoor unit to the branch box.

Power Multi Series

The Power Multi Series provides a quiet, highly efficient and flexible air conditioning system for all your heating and cooling needs. The Power Multi Series has been designed specifically for homes or small offices and is capable of connecting to a wider range of commercial-type indoor units via a branch box which simplifies piping work. It provides a quiet, highly efficient and flexible system for all your heating and cooling needs.



New Release

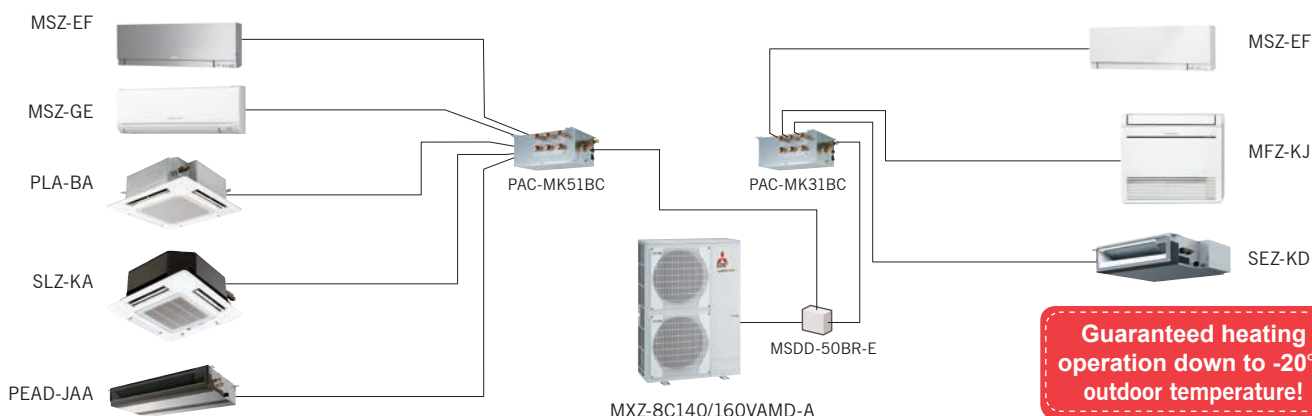
Branch Box

The Mitsubishi Electric Branch Box is unique to the Power Multi Series. Simplifying installation, Mitsubishi Electric Branch Boxes ensure your system is less invasive and more responsive.



Central Control Compatible

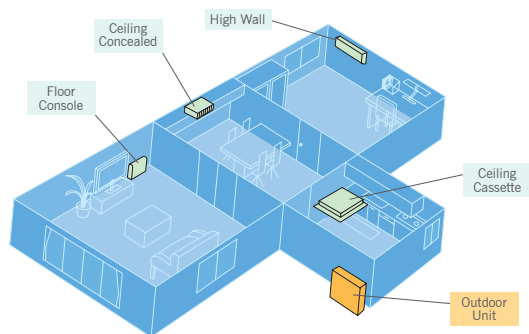
The new MXZ-8C140/160VAMD-A are compatible with central controllers AE200 and AT50, providing full M-NET control!



Guaranteed heating operation down to -20°C outdoor temperature!

Classic Multi Series

The Multi-Split system allows up to six M Series or Mr. Slim wall mounted, cassette, ducted, floor or ceiling mounted indoor unit heat pumps of different capacities to be operated from a single outdoor unit.



This makes it an economic answer in multi-room applications, whilst also offering space benefits. Up to six indoor units can be connected to a single outdoor unit without the need for a branch box. Suitable for small to medium sized homes.



Quiet Operation (Silent Mode)*

When operating the MXZ outdoor unit in Silent Mode*, the outdoor sound level on an MXZ-3E54VAD and MXZ-4E71VAD is just 45dBA. In combination with the MSZ-GE25/35VAD2, indoor noise can also be reduced to a quiet 19dBA. New Zealand's Quietest Heat Pumps...ever!

*Silent mode needs to be set when installed



Energy Saving with High COP

Mitsubishi Electric Inverter Technology provides superior energy efficiency with high COPs (Coefficient of Performance). With COPs over 4, every dollar you spend you get over four dollars back!

Model	COP
MXZ-3E54VAD	4.53
MXZ-4E71VAD	4.49
MXZ-4E80VAD	4.61
MXZ-5E100VAD	4.53

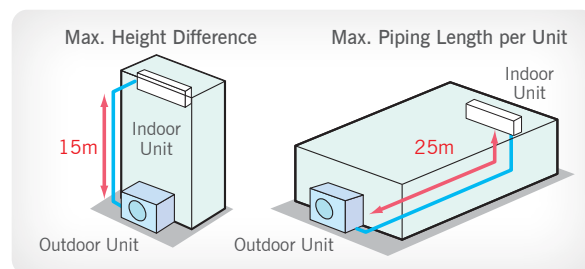
Fix Operation Mode

It is possible to lock operation to 'Heating' or 'Cooling' mode. This is convenient in places such as rental properties or hotels.

Longer Piping Length - Classic Series

Piping is extendable up to 25m per indoor unit¹ with no more than 15m in height (additional refrigerant charge may be required). Total install pipe length may extend up to 80m.²

¹MXZ-2D52 up to 20m ²MXZ-5E100 and MXZ-6E120



Guaranteed Heating down to -15°C

Not all heat pumps perform when they are needed most. Our Classic Multi Range is guaranteed to effectively provide heating on those cold nights or mornings when you really need it.

Controls

Refer to page 20 for the full list of available controls.



New Release

Classic Multi Series

Outdoor Units



MXZ-2D52VA
Connect 2 indoor units
Up to Class 50 (total 75)*
Heating Capacity: 6.1 kW
Cooling Capacity: 5.2 kW



MXZ-3E54VAD
Connect 2-3 indoor units
Up to Class 50 (total 100)*
Heating Capacity: 7.0 kW
Cooling Capacity: 5.4 kW



MXZ-4E71VAD
Connect 2-4 indoor units
Up to Class 60 (total 125)*
Heating Capacity: 8.0 kW
Cooling Capacity: 7.1 kW



MXZ-4E80VAD
Connect 2-4 indoor units
Up to Class 71 (total 145)²
Heating Capacity: 8.8 kW
Cooling Capacity: 8.0 kW



MXZ-5E100VAD
Connect 2-5 indoor units
Up to Class 71 (total 171)*
Heating Capacity: 10.0 kW
Cooling Capacity: 10.0 kW



MXZ-6E120VAD
Connect 2-6 indoor units
Up to Class 80 (total 180)*
Heating Capacity: 13.5 kW
Cooling Capacity: 12.0 kW

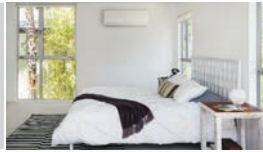


MXZ-8C140VAMD
Connect 2-8 indoor units
Up to Class 100 (total 182)*
Heating Capacity: 16.0 kW
Cooling Capacity: 14.0 kW



MXZ-8C160VAMD
Connect 2-8 indoor units
Up to Class 100 (total 201)*
Heating Capacity: 18.0 kW
Cooling Capacity: 15.5 kW

Classic GE Series



MSZ-GE22VAD2
MSZ-GE25VAD2
MSZ-GE35VAD2
MSZ-GE42VAD2
MSZ-GE50VAD2

MSZ-GE22VAD2
MSZ-GE25VAD2
MSZ-GE35VAD2
MSZ-GE42VAD2
MSZ-GE50VAD2

MSZ-GE22VAD2
MSZ-GE25VAD2
MSZ-GE35VAD2
MSZ-GE42VAD2
MSZ-GE50VAD2
MSZ-GE60VAD

MSZ-GE22VAD2
MSZ-GE25VAD2
MSZ-GE35VAD2
MSZ-GE42VAD2
MSZ-GE50VAD2
MSZ-GE60VAD
MSZ-GE71VAD

MSZ-GE22VAD2
MSZ-GE25VAD2
MSZ-GE35VAD2
MSZ-GE42VAD2
MSZ-GE50VAD2
MSZ-GE60VAD
MSZ-GE71VAD

MSZ-GE22VAD2
MSZ-GE25VAD2
MSZ-GE35VAD2
MSZ-GE42VAD2
MSZ-GE50VAD2
MSZ-GE60VAD
MSZ-GE71VAD
MSZ-GE80VAD

MSZ-GE22VAD2
MSZ-GE25VAD2
MSZ-GE35VAD2
MSZ-GE42VAD2
MSZ-GE50VAD2
MSZ-GE60VAD
MSZ-GE71VAD
MSZ-GE80VAD

MSZ-GE22VAD2
MSZ-GE25VAD2
MSZ-GE35VAD2
MSZ-GE42VAD2
MSZ-GE50VAD2
MSZ-GE60VAD
MSZ-GE71VAD
MSZ-GE80VAD

Deluxe FH Series



MSZ-FH25VE
MSZ-FH35VE

MSZ-FH25VE
MSZ-FH35VE
MSZ-FH50VE

MSZ-FH25VE
MSZ-FH35VE
MSZ-FH50VE

MSZ-FH25VE
MSZ-FH35VE
MSZ-FH50VE

MSZ-FH25VE
MSZ-FH35VE
MSZ-FH50VE

MSZ-FH25VE
MSZ-FH35VE
MSZ-FH50VE

MSZ-FH25VE
MSZ-FH35VE
MSZ-FH50VE

MSZ-FH25VE
MSZ-FH35VE
MSZ-FH50VE

Designer Series



MSZ-EF22VE2W/B/S
MSZ-EF25VE2W/B/S
MSZ-EF35VE2W/B/S
MSZ-EF42VE2W/B/S
MSZ-EF50VE2W/B/S

MSZ-EF22VE2W/B/S
MSZ-EF25VE2W/B/S
MSZ-EF35VE2W/B/S
MSZ-EF42VE2W/B/S
MSZ-EF50VE2W/B/S

MSZ-EF22VE2W/B/S
MSZ-EF25VE2W/B/S
MSZ-EF35VE2W/B/S
MSZ-EF42VE2W/B/S
MSZ-EF50VE2W/B/S

MSZ-EF22VE2W/B/S
MSZ-EF25VE2W/B/S
MSZ-EF35VE2W/B/S
MSZ-EF42VE2W/B/S
MSZ-EF50VE2W/B/S

MSZ-EF22VE2W/B/S
MSZ-EF25VE2W/B/S
MSZ-EF35VE2W/B/S
MSZ-EF42VE2W/B/S
MSZ-EF50VE2W/B/S

MSZ-EF22VE2W/B/S
MSZ-EF25VE2W/B/S
MSZ-EF35VE2W/B/S
MSZ-EF42VE2W/B/S
MSZ-EF50VE2W/B/S

MSZ-EF22VE2W/B/S
MSZ-EF25VE2W/B/S
MSZ-EF35VE2W/B/S
MSZ-EF42VE2W/B/S
MSZ-EF50VE2W/B/S

MSZ-EF22VE2W/B/S
MSZ-EF25VE2W/B/S
MSZ-EF35VE2W/B/S
MSZ-EF42VE2W/B/S
MSZ-EF50VE2W/B/S







New Release

Power Multi Series

¹To be used as a guide only. Please view the outdoor unit's capacity charts on www.mitsubishi-electric.co.nz for possible combination connections.

²Note: The MXZ-4E80VA can only use 1x class 71 indoor

*Total maximum capacity connectable.

Classic SLZ Cassette Series	RapidHeat Series	Classic Suspended PCA	Deluxe PLA Cassette Series	Total home SEZ Series	Total home PEADSeries
					
SLZ-KA25VAQ/L	MFZ-KJ25VE MFZ-KJ35VE			SEZ-KD35VAQ	
SLZ-KA25VAQ/L SLZ-KA50VAQ/L	MFZ-KJ25VE MFZ-KJ35VE MFZ-KJ50VE	PCA-RP50KAQ		SEZ-KD35VAQ SEZ-KD50VAQ	
SLZ-KA25VAQ/L SLZ-KA50VAQ/L	MFZ-KJ25VE MFZ-KJ35VE MFZ-KJ50VE	PCA-RP50KAQ PCA-RP60KAQ	PLA-RP60BA	SEZ-KD35VAQ SEZ-KD50VAQ SEZ-KD60VAQ	
SLZ-KA25VAQ/L SLZ-KA50VAQ/L	MFZ-KJ25VE MFZ-KJ35VE MFZ-KJ50VE	PCA-RP50KAQ PCA-RP60KAQ PCA-RP71KAQ	PLA-RP60BA PLA-RP71BA	SEZ-KD35VAQ SEZ-KD50VAQ SEZ-KD60VAQ SEZ-KD71VAQ	PEAD-RP71JAA
SLZ-KA25VAQ/L SLZ-KA50VAQ/L	MFZ-KJ25VE MFZ-KJ35VE MFZ-KJ50VE	PCA-RP50KAQ PCA-RP60KAQ PCA-RP71KAQ	PLA-RP60BA PLA-RP71BA	SEZ-KD35VAQ SEZ-KD50VAQ SEZ-KD60VAQ SEZ-KD71VAQ	PEAD-RP71JAA
SLZ-KA25VAQ/L SLZ-KA50VAQ/L	MFZ-KJ25VE MFZ-KJ35VE MFZ-KJ50VE	PCA-RP50KAQ PCA-RP60KAQ PCA-RP71KAQ	PLA-RP60BA PLA-RP71BA	SEZ-KD35VAQ SEZ-KD50VAQ SEZ-KD60VAQ SEZ-KD71VAQ	PEAD-RP71JAA
SLZ-KA25VAQ/L SLZ-KA50VAQ/L	MFZ-KJ25VE MFZ-KJ35VE MFZ-KJ50VE	PCA-RP50KAQ PCA-RP60KAQ PCA-RP71KAQ PCA-RP100KAQ	PLA-RP60BA PLA-RP71BA PLA-RP100BA	SEZ-KD35VAQ SEZ-KD50VAQ SEZ-KD60VAQ SEZ-KD71VAQ	PEAD-RP71JAA PEAD-RP100JAA
SLZ-KA25VAQ/L SLZ-KA50VAQ/L	MFZ-KJ25VE MFZ-KJ35VE MFZ-KJ50VE	PCA-RP50KAQ PCA-RP60KAQ PCA-RP71KAQ PCA-RP100KAQ	PLA-RP60BA PLA-RP71BA PLA-RP100BA	SEZ-KD35VAQ SEZ-KD50VAQ SEZ-KD60VAQ SEZ-KD71VAQ	PEAD-RP71JAA PEAD-RP100JAA

Controllers

Handheld Remotes



Featuring a 24 hour timer, this simple handheld remote features an easy-to-read display and a variety of operating modes at the touch of a button. The timer feature allows users to set a stop/start operation on a daily basis. This remote controller is included as standard on all Classic SLZ Cassettes. Optional on Deluxe PLA Cassettes and Ceiling Suspended PCA Series.



7-Day Controller

Allowing you to program up to four time and temperature settings for each day of the week, you can now return to comfort without having to manually adjust the temperature. Perfect for anyone with a busy lifestyle, the 7-Day Controller is a great way to regulate your energy usage without compromising on comfort. This 7-Day Controller is available on the GE Series*, Designer Series, Deluxe FH Series and RapidHeat Series models only.

*GE22/25/35/42/50 is a Line-of-Sight version.

Wall Mounted Controllers

Standard Inclusion: SLZ-VAQ, SEZ, PEAD. Optional upgrade for all other multi-indoors.



PAR-31 7-Day Controller

The PAR-31 Controller allows you to program up to 8 stop/start patterns per day for up to 7 days at a time. Other features include a variety of operation control functions, operation lock and multi-language display. The PAR-31 also offers the following at the touch of a button: LCD backlit screen, large easy to read display and mode view for both icon and word display.

Central Controllers (Optional Upgrade)



AT-50B 5" LCD Touch Screen

Able to control up to 50 units and featuring both weekly and daily timer functions, the AT-50B is a cost effective solution for large domestic or small commercial systems. Featuring a 5" backlit, colour touch-screen LCD display, the AT-50B is also able to be integrated for control of additional equipment such as; extractor and fresh air fans, ventilation systems and outdoor security lighting.



As part of a larger system, domestic or commercial, the power multi series can be connected directly to M-NET control, benefitting directly from the features of AT50B and AE200 without the need for interface. In particular, the AE200 allows web browser and BMS control.

Wi-Fi Control (Optional Upgrade)

GE, EF, FH, KJ, SEZ and PEAD only

Turn Heat Pumps On/Off

Ensures superior control over heat pump systems by allowing you to turn your heat pump on/off.

Change Modes

Choose from the five operating modes available: Auto, Heat, Dry, Fan and Cool. This feature allows you to customise your system to meet your needs.

Change Fan Speeds

Specify a fan speed between one and five or allow the system to automatically adjust to the requirements of the area.

Change Airflow Direction

Vane positions provide directional control of airflow from the indoor unit. Choose Auto, Swing or set a specific direction to target key areas in the room.

Change Temperature

Displays actual room temperature information allowing you to adjust your heat pump settings to suit the conditions.

Zone Controller

PAC-ZC40(H/L)-E / PAC-ZC80(H/L)-E - PEAD only

With the ability to control up to 8 zones* and equipped with automatic unloading/ramping and three built in sensor functions (Temperature, Occupancy, Brightness), the PAC-ZC40~80 Zone Controller brings intuitive yet simple control to a whole new level.

Temperature Sensor

With an inbuilt thermostat (PAR-ZC01ME-E wall controller), the Zone Controller allows the actual usable space temperature to be measured, offering a more realistic and timely temperature measurement where it is needed most.

Occupancy Sensor

The Zone Controller (via the PAR-ZC01ME-E wall controller) constantly monitors the usable area to detect vacancy. Once detected, one of 4 user defined energy-save control options can be implemented to reduce energy consumption: turn the unit on/off, lower the fan speed, temperature offset, or turn user designated zones on/off.

Develop Operating Rules

Programme your system to automatically turn on/off at specific times, change settings and develop temperature rules to ensure superior comfort day after day.

Energy Saving, Optimised

When connected to a compatible Mitsubishi Electric Ducted System complete with optional PAC-ZC Zone Control, Wi-Fi Control unlocks expanded functionality and interaction to deliver the very best in advanced energy optimisation.



For more information visit www.mitsubishi-electric.co.nz



Brightness Sensor

Working in conjunction with the Occupancy Sensor, the Brightness Sensor can be set to maximise energy savings when it detects user defined "Light" or "Dark" conditions (lux values).



Backlit LCD Touch Screen

Featuring a liquid-crystal display (LCD), back-lit for operation in dark conditions. For ease of use, the user defined coloured LED indicator (at the bottom of the controller) lights up to indicate the current operation mode i.e. red for heating, blue for cooling, green for night setback.

Optional Wi-Fi Control

Advanced temperature monitoring and management. Now you can control, monitor and schedule which zones your ducted heat pump is controlling in real time from anywhere via your smart phone, tablet or online account.

*PAC-ZC80 only. PAC-ZC40 only allows control of 4 zones. Compatible with either 24V or 240V damper options. Optional: 1x additional PAR-ZC01ME-E controller and 2x thermistors (PAC-SE41TS-E) can be installed.

Specifications

Outdoor Units

New Release*

Classic Multi Series Outdoor Unit

MODEL NAME				MXZ-2D52VA	MXZ-3E54VAD	MXZ-4E71VAD	MXZ-4E80VAD	MXZ-5E100VAD	MXZ-6E120VAD
CONNECTABLE INDOORS				2 indoor units	2-3 indoor units	2-4 indoor units	2-4 indoor units	2-5 indoor units	2-6 indoor units
COOL	Capacity	Rated	[kW]	5.2	5.4	7.1	8.0	10.0	12.0
		Min-Max	[kW]	1.1 - 6.0	2.9 - 6.8	3.7 - 8.8	3.7 - 9.2	3.9 - 11.0	3.5 - 13.5
	Input		[kW]	1.38	1.25	1.89	2.07	2.95	3.53
	EER ³			3.88	4.36	3.77	3.87	3.50	3.49
	Sound Level (Silent ¹ /High)		[dBA]	50	45 / 50	45 / 50	48 / 51	49 / 52	52 / 55
	Rated Current ²		[A]	6.3	5.5	8.3	9.1	13.0	15.5
	Air Volume (High)		[L/s]	525	633	633	958	1085	1050
HEAT	Capacity	Rated	[kW]	6.1	7.0	8.0	8.8	10.0	13.2
		Min-Max	[kW]	1.0 - 7.0	2.6 - 9.2	3.4 - 10.7	3.4 - 11.8	4.1 - 14.0	3.5 - 16.5
	Input		[kW]	1.55	1.63	1.84	1.91	2.30	3.49
	COP ³			4.07	4.53	4.49	4.61	4.53	4.29
	Sound Level (Silent ¹ /High)		[dBA]	53	48 / 53	48 / 54	48 / 51	54 / 57	54 / 57
	Rated Current ²		[A]	7.1	7.1	8.1	8.4	10.1	15.3
	Air Volume (High)		[L/s]	532	735	757	927	1133	1283
Max. Total Connectable Capacity			[kW]	7.5	10.0	12.5	14.5	17.1	18.0
Power Supply [V, Phase, Hz]				230V, Single Phase, 50Hz, Outdoor Power Supply					
Outdoor	Dimensions (WxDxH)		[mm]	800 x 285 x 550	840 x 330 x 710	840 x 330 x 710	900 x 320 x 915	900 x 320 x 915	900 x 320 x 1070
	Weight		[kg]	37	57	58	63	64	88
Ext. Pipe	Liquid (Diameter)		[mm]	6.35 x 2	6.35 x3	6.35 x4	6.35 x4	6.35 x5	6.35 x6
	Gas (Diameter)		[mm]	9.52 x 2	9.52 x3	9.52 x3 + 12.7 x1	9.52 x3 + 12.7 x1	9.52 x4 + 12.7 x1	9.52 x5 + 12.7 x1
	Max. Length ⁵ (Total/Each)		[m]	30/20	50/25	60/25	70 / 25	80 / 25	80 / 25
	Max. Height ⁷		[m]	15 (10) ⁷	15 (10) ⁷	15 (10) ⁷	15 (10) ⁷	15 (10) ⁷	15 (10) ⁷
	Chargeless Length		[m]	20	40	40	30	5	30
Outdoor	Cooling		[°C]	-10 / +46	-10 / +46	-10 / +46	-10 / +46	-10 / +46	-10 / +46
	Heating		[°C]	-15 / +24	-15 / +24	-15 / +24	-15 / +24	-15 / +24	-15 / +24

* Excluding the MXZ-2D52VA

New Release

Power Multi Series Outdoor Unit

MODEL NAME				MXZ-8C140VAMD	MXZ-8C160VAMD
CONNECTABLE INDOORS				2-8 indoor units	2-8 indoor units
COOL	Capacity	Rated	[kW]	14.0	15.5
	Input		[kW]	3.60	4.66
	EER ³			3.88	3.37
	Sound Level		[dBA]	50	51
	Rated Current ²		[A]	15.27	19.95
HEAT	Capacity	Rated	[kW]	16.0	18.0
	Input		[kW]	3.88	4.61
	COP ³			4.14	3.90
	Sound Level		[dBA]	52	54
	Rated Current ²		[A]	16.51	19.73
Max. Total Connectable Capacity			[kW]	18.5	20.1
Power Supply [V, Phase, Hz]			230V, Single Phase, 50Hz		
Outdoor	Dimensions (WxDxH)		[mm]	1050 x 330 x 1338	
	Weight		[kg]	125	
	Air Volume		[L/s]	1833 ⁴	
Ext. Pipe	Liquid (Diameter)		[mm]	9.52 x1	
	Gas (Diameter)		[mm]	15.88 x1	
	Max. Length ⁵ (Total)		[m]	150	
	Max. Height ⁷		[m]	20 (30) ⁷	
Outdoor	Cooling		[°C]	-5 / +46	
	Heating		[°C]	-20 / +15	

⁷ Given the range of indoor capacities and diversities available for use on these models, the Power Multi outdoor units do not have a fixed minimum or maximum capacity

Please note: Final outdoor unit selection will be affected by several different factors. The combination of rooms and their location, as well as operating use, will determine which of the proposed models you require. In many cases, an outdoor unit with a lower heating capacity may be adequate where not all indoor units are required to operate in maximum heating mode simultaneously. Or, if you are considering adding more indoor units in the future, in the interests of future-proofing, you may be best to select an outdoor unit capable of providing more capacity than you currently require.

¹ Default setting is required to activate this function at time of install

² Electrical data is for outdoor unit only.

³ MXZ-2D52VA » MSZ-GE35VAD2 x2
MXZ-3E54VAD » MSZ-GE25VAD2 x3
MXZ-4E71VAD » MSZ-GE25VAD2 x4
MXZ-4E80VAD » MSZ-GE25VAD2 x4
MXZ-5E100VAD » MSZ-GE25VAD2 x5
MXZ-6E120VAD » MSZ-GE25VAD2 x6
MXZ-8C140VAMD » MSZ-FH25VE x3 + MSZ-FH35VE x2 + PAC-MK51BC
MXZ-8C160VAMD » MSZ-FH25VE x2 + MSZ-FH35VE x3 + PAC-MK51BC

NOTE:

Rating Conditions (AS/NZS 3823).

COOLING Indoor: 27°C DB, 19°C WB. Outdoor: 35°C DB

⁴ HEATING Indoor: 20°C DB. Outdoor: 7°C DB, 6°C WB.

Refrigerant piping length (one way): 5m

Running Current and Power Input figures are for outdoor unit only.

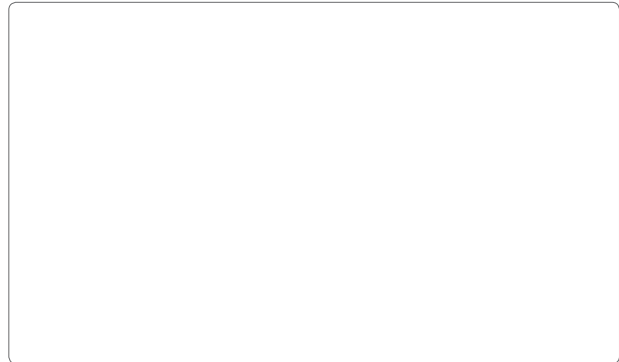
⁵ Maximum length is inclusive of height differential.

i.e. (30 max. length/15 max. height) means that 2x pipes can be 10m high and 20m across each for a total length of 30m.

⁷ If the outdoor unit is installed higher than the indoor unit.

Your Heat Pump Recommendation

Store Contact Details

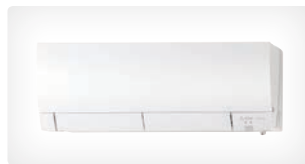


Staple business card here

Range Recommended (Circle below)



Classic GE Series
High Wall Heat Pumps p.5



Deluxe FH Series
High Wall Heat Pumps p.6 -7



Designer Series
High Wall Heat Pumps p.8



Cassette SLZ Series
Ceiling Mounted p.9



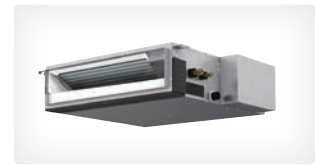
RapidHeat Series
Floor Consoles p.10-11



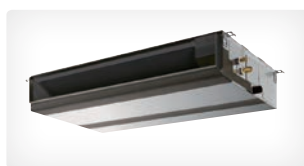
Ceiling Suspended PCA Series
Ceiling Mounted p.12



Deluxe PLA Series
Ceiling Mounted p.13



Total Home SEZ Series
Ceiling Concealed p.14



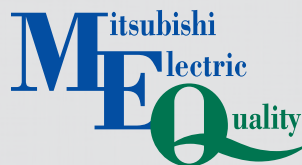
Total Home PEAD Series
Ceiling Concealed
Ducted System p.15

Visit www.mitsubishi-electric.co.nz/installer
to book your free in-home consultation today!

Notes

Choose the right one! Visit our online Heat Pump selector at:
www.mitsubishi-electric.co.nz/heatpump/selector





Quality you can rely on

- All units line tested
- Performance tested
- 800 hour heat stress test
- 2000 hour endurance test

Your Guarantee Of Excellence

This emblem is your assurance of the very best in technology and quality as it represents Mitsubishi Electric's continuing efforts in making our heat pumps the industry standard. Every Mitsubishi Electric Heat Pump is a product of painstaking research, relentless testing, and a resolute determination to improve upon vital performance characteristics. As a result, our heat pumps have become more durable, less costly to operate, quieter, easier to install and maintain, and better able to distribute air evenly throughout any type of interior. This kind of commitment to quality enables our products to create remarkably pleasant environments that will ultimately make your life more comfortable.

For more information on Mitsubishi Electric Heat Pumps, please call our customer service team on **0800 784 382**



www.mitsubishi-electric.co.nz



Black Diamond Technologies

Exclusive distributor of Mitsubishi
Electric products in New Zealand.

WELLINGTON HEAD OFFICE

1 Parliament Street
PO Box 30772
Lower Hutt 5040

Phone (04) 560 9147
Fax (04) 560 9133

AUCKLAND BRANCH

Unit 1, 4 Walls Road
PO Box 12726
Penrose, Auckland 1642

Phone (09) 526 9347
Fax (09) 526 9369

CHRISTCHURCH BRANCH

44 Halwyn Drive
PO Box 16904
Hornby, Christchurch 8441

Phone (03) 341 2837
Fax (03) 341 2838